

As the word 'uniform' indicates, Blackburn High School has a distinctive outfit that is intended to identify those who wear it as members of Blackburn High School. It is an **unvarying outfit** and it is a 'compulsory uniform'. It should be worn with pride and enrolment is conditional on compliance with the School's uniform dress code.

The school uniform is an important part of a Blackburn High School education. We believe the uniform is a vital part of developing and maintaining our high standards. Wearing the school uniform correctly is important because it represents the pride and respect we have for the school and more importantly for ourselves. Attention to personal presentation develops habits of self-discipline and responsibility which are skills essential in a 21<sup>st</sup> Century education.

Below shows set guidelines about student appearance and the following purposes were considered when developing these guidelines (in line with 'Victorian Government Schools Reference Guide'):

- Allowing all students to feel equal
- Ensuring that students' appearance reflects the expectations of their community
- Enhancing the profile, image or identity of the school and its student within the wider community
- Preparing students for the expectations of workplaces
- Encouraging students to present themselves appropriately for a particular role and develop pride in their appearance.

## Summer Uniform Terms 1 & 4



### Dress

Blackburn High regulation school dress

### Shorts

Blackburn High regulation grey school shorts

### Pants

Blackburn High regulation grey school pant

### Shirt

Blackburn High regulation crested short sleeved shirt

### Blazer

Blackburn High regulation black blazer - must be worn as the outer garment if and when an outer garment is required

### Jumper

Blackburn High regulation woollen pull-over (optional – for extra warmth under the blazer)

### Hat

Blackburn High regulation school hat

### Socks

White (must not be ankle socks – must cover the ankle) with the dress

Grey (must not be ankle socks – must cover the ankle) with shorts and pants

### Shoes

Polished black leather lace-up or T-bar school shoes with flat heel (not leather runners or casual shoes)

### Bag

Blackburn High regulation school bag



## Winter Uniform Terms 2 & 3



### Skirt

Blackburn High regulation pleated skirt

### Shorts

Blackburn High regulation grey school shorts

### Pants

Blackburn High regulation grey school pant

### Shirt

White long sleeved shirt or short sleeve crested shirt and must be worn with tie

### Blazer

Blackburn High regulation black blazer - must be worn as the outer garment if and when an outer garment is required

### Jumper

Blackburn High regulation woollen pull-over (optional – for extra warmth under the blazer)

### Tie

Blackburn High regulation school tie

### Socks or tights

Black socks or tights (must not be ankle socks – must cover the ankle) with the dress

Grey socks (must not be ankle socks – must cover the ankle) with shorts and pants

### Shoes

Polished black leather lace-up or T-bar school shoes with flat heel (not leather runners or casual shoes)

### Bag

Blackburn High regulation school bag



## Other Uniform Requirements

### Summer Dress and Winter Skirt

Must be touching the knee or below

### Hair and Accessories

Neat and tidy, and tied back with black, dark green, or white ties. Hair colouring to be a natural hair shade.

### Jewellery

Piercings must be discreet and limited to small studs. No more than one per ear and one nostril.

### Make-up

Must be minimal and unobtrusive. Students will be required to remove make-up that is judged to be conspicuous. Dark nail polish is not permitted.

### Scarf and gloves

Blackburn regulation scarf and black gloves (winter only)

Items which are part of the summer uniform cannot be worn at the same time as items which are part of the winter uniform.

## Special Uniforms

Special uniforms are not to be worn in place of or in combination with the school academic or sport uniform; however students may be allowed to come to school in Sports/Music uniform if participating in whole-day activities and this is indicated on the permission note.

## Sport Uniform

For Years 7–9 the sport uniform is to be worn on their designated Sport class day.

Any students representing the school in a sport team, both at school or externally, must wear the full sport uniform.



### Shorts Sports

Blackburn Regulation

### Polo top

Blackburn Regulation

### Track pants

Blackburn Regulation

### Sports Rugby Top

Blackburn Regulation

### Sports Jacket

Blackburn Regulation

### Sports shoes

Sports shoes/runners

### Socks

Plain white, ankle length

### Hat

Blackburn Regulation Hat (Term 1 and Term 4)

## Music Performance

- Pants: Black regulation
- Skirt: Black regulation
- Shoes: Black school shoes
- Shirt: Black Regulation

In accordance with traditional practice various performing groups may decide on individual variation to these. No performance uniform should be purchased until appropriate notice has been received by the Music Department.

## Dress Code

This applies when students are permitted to attend school activities out of uniform (including when students are on duty, free dress days and other occasions when students are permitted to attend school or school activities out of uniform). Blackburn High School students must

- Wear the style of clothing described by the teacher in charge as appropriate. If in doubt, the student must check with this teacher before the event.
- Wear footwear and clothing that protects the student from injury, from sun damage and from cold. (e.g. No student is ever permitted to wear thongs to school, including when on Duty)
- Wear clothing to school which meets similar sun smart, safety and suitability as regular uniform.

The Principal ultimately determines whether a student's clothing conforms to the uniform and dress code policies.

The development and review of a student dress code policy is the responsibility of the School Council in consultation with its school community and the requirements of the School's dress code take precedence over a student's individual preference in matters of dress. Consequently, in determining a student dress code policy, School Council considers a number of criteria from the 'Improving School Governance' guide.

## Sun Smart

All students are advised to wear hats and sunscreen when in the sun, in Terms 1 and 4, and must do so while playing sport.

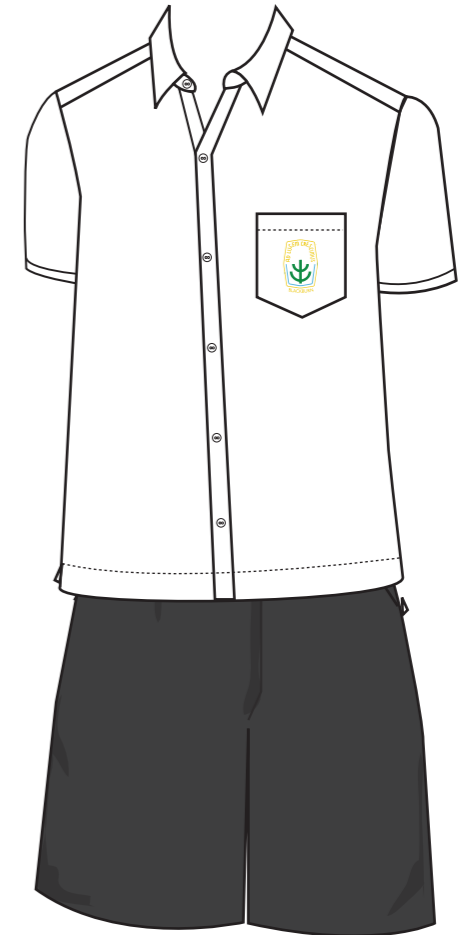
## Purchase of Uniform

Uniform is available from our school supplier Dobsons from their shop in Doncaster Road, North Balwyn.

Second hand uniforms are sold at the school, please contact the School's front office for further information.

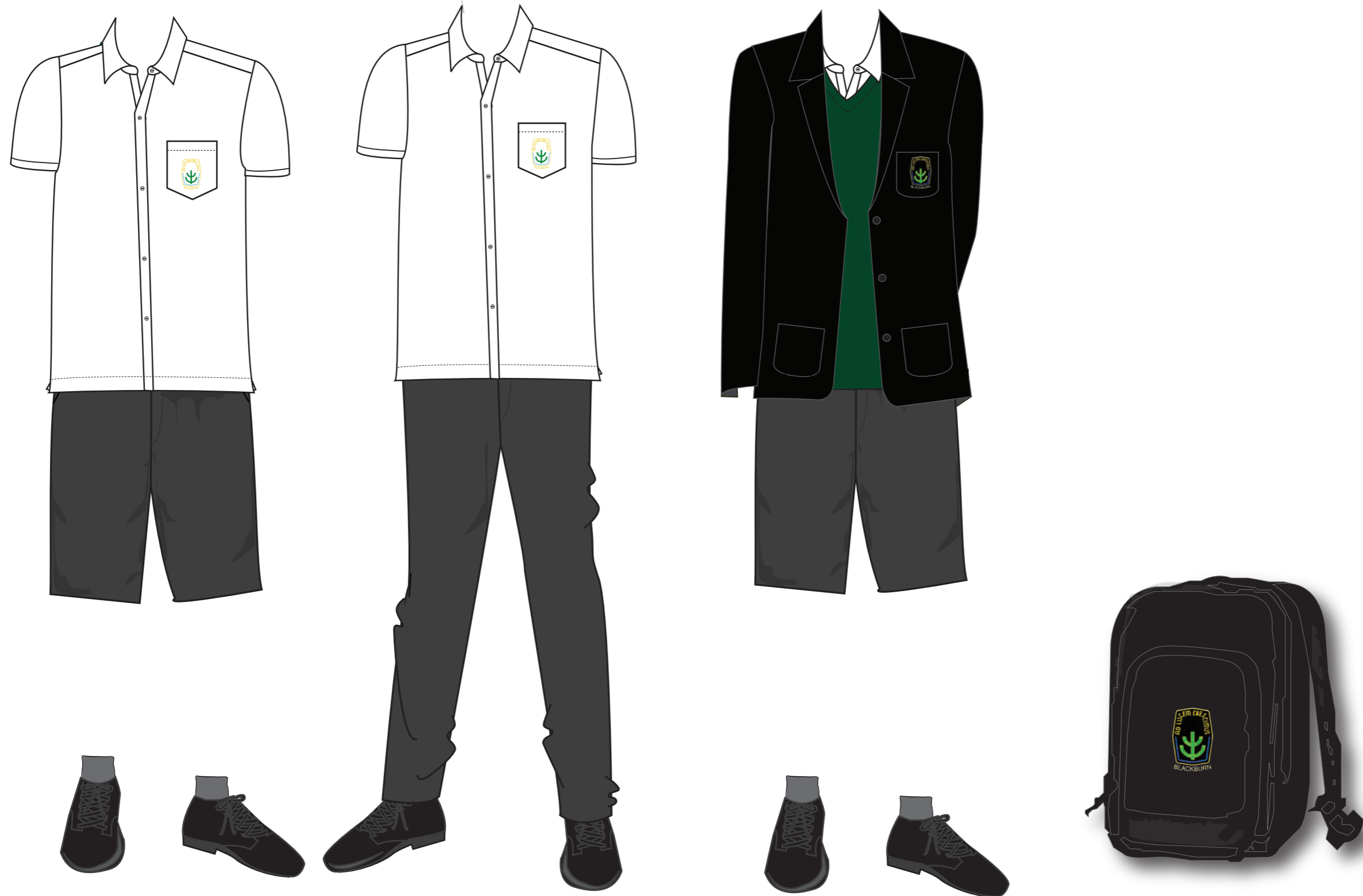
# BLACKBURN HIGH SCHOOL

## ACADEMIC UNIFORM - SUMMER TERM 1 & TERM 4



# BLACKBURN HIGH SCHOOL

## ACADEMIC UNIFORM - SUMMER TERM 1 & TERM 4



# BLACKBURN HIGH SCHOOL

## ACADEMIC UNIFORM - WINTER TERM 2 & TERM 3



# BLACKBURN HIGH SCHOOL

## ACADEMIC UNIFORM - WINTER TERM 2 & TERM 3



# BLACKBURN HIGH SCHOOL

## SPORTS UNIFORM



## Dear Families,

We want to inform you about upcoming changes to the school uniform policy for Victorian government schools commencing in 2026. The changes affect items worn *from the waist down* (such as shorts, pants and socks). These changes are designed to make uniforms more affordable.

### What is *not* changing:

- Blackburn High School logo/branding remains part of required uniform for items *above the waist*, such as shirts, tops, jumpers, jackets, dresses, hats and bags.
  - The primary distributor for these items is Dobsons, and our second-hand uniform store on-site will continue to provide families with more economical options.
- Students who already own uniform items with branding on waist-down items will be able to continue wearing them. They remain part of the uniform.
- The only skirt option for the winter uniform is the tartan skirt sold by Dobsons.

### What is changing:

- From the start of **2026**, the following items will no longer be required to have the school logo or branding:
  - Shorts, pants and socks.
- This includes the academic and PE/Sport uniforms.

### What this means for you:

- When purchasing below the waist items, you will have the option to buy plain non-branded (no logos) generic versions.
- The school's uniform policy contains the following guidance as an amendment to reflect these changes.
- Guidelines for the required fabric and colours for these items are listed below.

### Guidelines for below the waist uniform items:

#### Academic uniform - slacks and shorts:

- Fabric must be grey cotton twill (woven weave).
- ***Knit fabrics e.g. jersey, fleece, and spandex are not acceptable.*** A knit fabric is the type of fabric that tracksuit, yoga pants or leggings might be made from.
- Any pants from the Blackburn High School Dobson's Uniform store that are grey are acceptable. Some other suggestions are shown below.

#### PE/Sport uniform - pants and shorts:

- Plain navy-blue sport shorts (no logos/branding) – these must be **loose** fitted mid-thigh or knee length
- Plain navy-blue tracksuit pants (no logos/branding) must have an elasticised band at the bottom as wide legged track pants pose an OHS tripping issue for sport.
- ***Leggings and tight fitted yoga pants or bike shorts are NOT acceptable***

If you have any questions, are facing difficulties, or would like help accessing uniform support, please contact Andrea Julien in the General Office

Kind regards,

The Principal Team and School Council

### Guidelines for below the waist uniform items

#### Academic uniform - slacks and shorts:

- Fabric must be grey cotton twill (woven weave).
- Knit fabrics e.g. jersey, fleece, and spandex are **not acceptable**. A knit fabric is the type of fabric that tracksuit, yoga pants or leggings might be made from.
- Any pants from the Blackburn High School Dobson’s Uniform store are acceptable. Some other suggestions are shown below.

Some examples we have found online include the following options:

Target	Uniqlo	H&M		ASOS
Tailored Wide Leg Pants - Lily Loves \$30 	Smart Ankle Pants Grey \$49.90 	Cigarette Pants Grey Marle \$34.99 		Tailored slim straight pants in grey \$41.25. 
School Structured Twill Pants – Grey \$16 	Smart Ankle Pants Grey \$59.90 	Regular Fit Suit Pants Grey \$49.99 	Slim Fit Tailored Pants \$49.99 	Pull on smart wide leg pants in charcoal \$50.50. 
Structured Twill Shorts – Mid Grey \$12 	Slim Fit Cotton Twill Shorts Dark grey \$34.99 			

#### PE/Sport uniform - pants and short

- Plain navy-blue sport shorts (no logos/branding) – these must be **loose** fitted mid-thigh or knee length
- Plain navy-blue tracksuit pants (no logos/branding) must have an elasticized band at the bottom as wide legged track pants pose an OHS tripping issue for sport.
- **Leggings and tight fitted yoga pants or bike shorts are NOT acceptable**